



WE BUILD NECESSITIES, NOT ACCESSORIES.

7050104/05



THE PERRY COMPANY
WWW.PERRY-CO.COM

500 S. VALLEY MILLS DRIVE
 WACO, TX 76711
 PHONE: 800-755-4269
 FAX: 254-756-2166

INSTALLATION INSTRUCTIONS: **7050104 (Tinted), 7050105 (Clear)**

Replacement Windshield Fits: John Deere

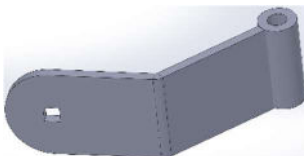
2017 – 2021: 320G, 324G, 325G, 330G, 331G & 333G-Series

Hardware Kit:

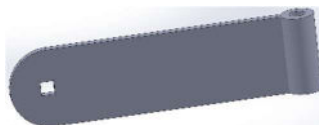
- 1 - M12 x 35mm Hex Head Bolt
- 1 - 12mm Flat Washer
- 1 - M12 Flange Nut
- 1 - 5/16" x 1" Carriage Bolt
- 1 - 5/16" Flat Washer
- 1 - 5/16" Nylon Locknut

Components:

- 1 - John Deere Windshield
Polycarbonate 1/2"
- 1 - Upper Hinge (7050104 A)
- 1 - Lower Hinge (7050104 B)
- 1 - Striker Bracket (7050104 C)
- 1 - Striker Guard (7050104 H)
- 2 - 3/16" Thk. Hinge Washers (7050104 G)
- 1 - Horn Bracket (7050104 L)
- 1 - Sensor Bracket (7050104 M)
- 1 - Latch Handle Gasket (7050104K)



Upper Hinge
(7050104 A)



Lower Hinge
(7050104 B)



Latch Handle Gasket
(7050104K)



Striker Guard
(7050104 H)



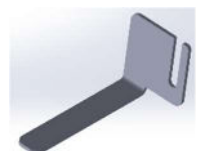
Hinge Washer
(7050104 G)



Striker Bracket
(7050104 C)



Horn Bracket
(7050104 L)



Sensor Bracket
(7050104 M)

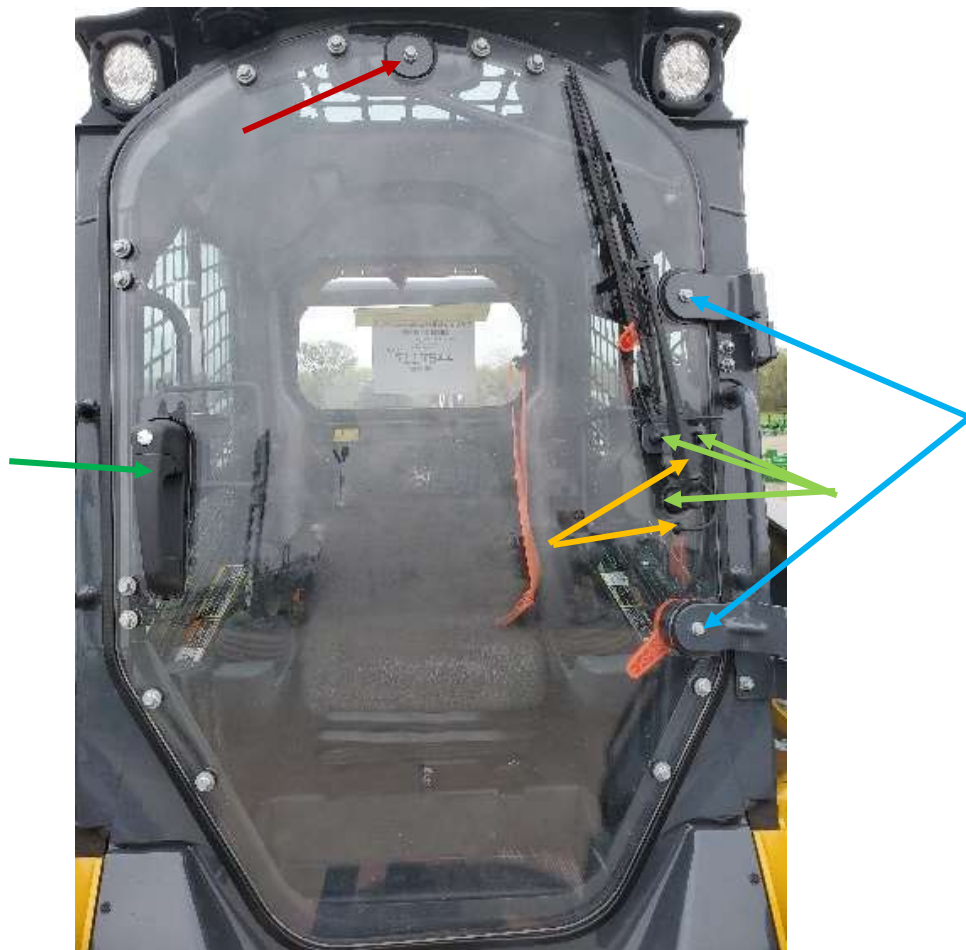
Step 1: Remove Factory Door from Unit

From the inside of cab, disconnect the electrical connector for the wiper motor. Disconnect the washer tube from the plastic washer tube fitting. Disconnect the Gas Prop from the ball mount. From the outside of the unit, remove the cotter key from the Upper Hinge. At this point, the windshield is ready to be removed from the unit.

Make sure to keep all of the OEM hardware until the end of the project because some of the OEM hardware will be reused.

Step 2: Remove Hardware from Factory Door

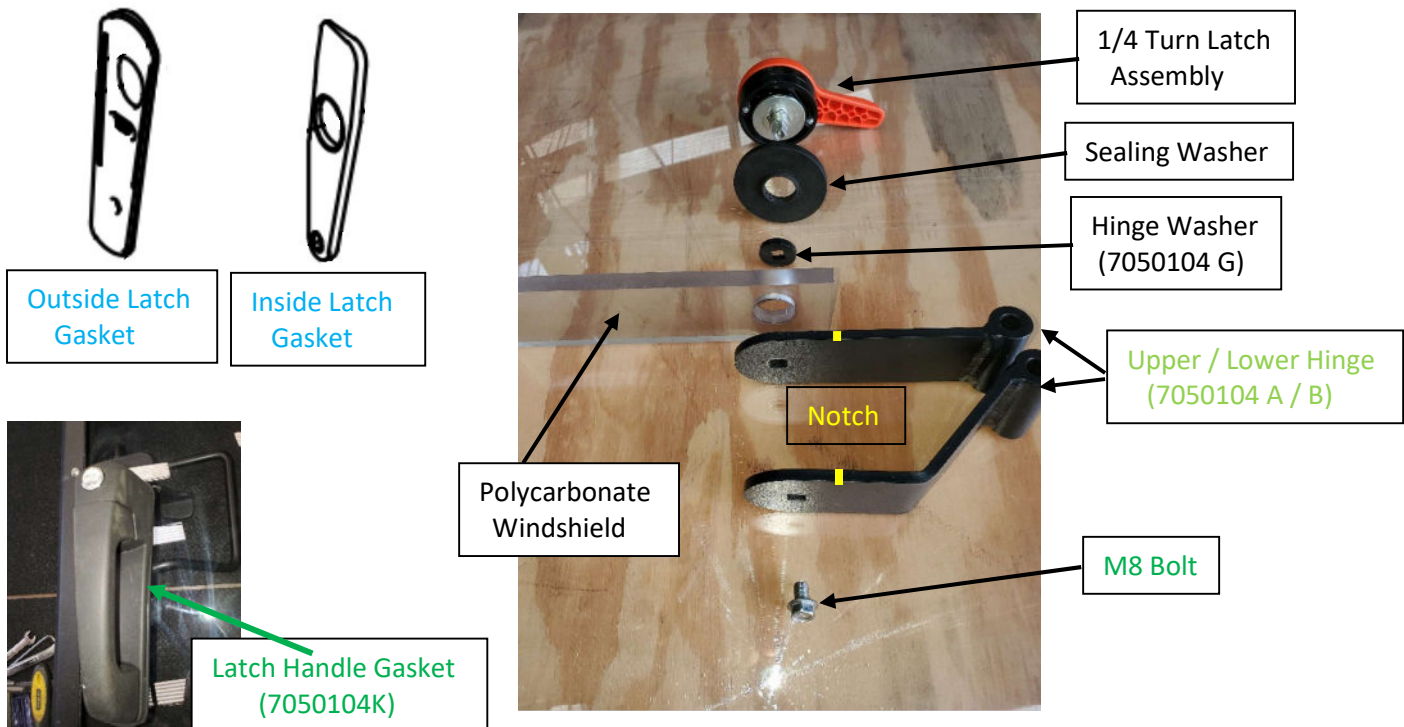
Remove the **Gas Prop Ball Mount** from the factory windshield. Remove the **Latch Handle Assembly** from the factory windshield. Remove the plastic **Washer Tube Fitting** from the factory windshield and remove the **Wiper Arm** from the Wiper Motor. Remove the **large nut** from the Wiper Motor Shaft along with **the two (2) smaller nuts** to remove the Wiper Motor Assembly from the factory windshield. Remove the **Upper** and **Lower Hinges** by removing the **M8 bolts** from the Latch Assemblies.



Step 3: Install Hardware onto the Polycarbonate Windshield

For this step, use the OEM hardware that was set aside in Step #1

Install the Latch Handle Assembly onto the Polycarbonate Windshield using the supplied **Latch Handle Gasket** on outside of the polycarbonate. Do not install the **inside** and **outside latch gaskets** (**these will NOT be used**). Install the Wiper Motor Assembly onto the Polycarbonate Windshield. Install the Wiper Arm and Washer Tube Fitting onto the Polycarbonate Windshield. Install the Gas Prop ball mount onto the Polycarbonate Windshield. Install the new **Upper and Lower Hinges** as shown below. Notch on both hinges go "Up" on the unit. For ease of installing the new windshield onto the unit, do not fully tighten the **M8 mounting bolts** until after the windshield is on the unit.



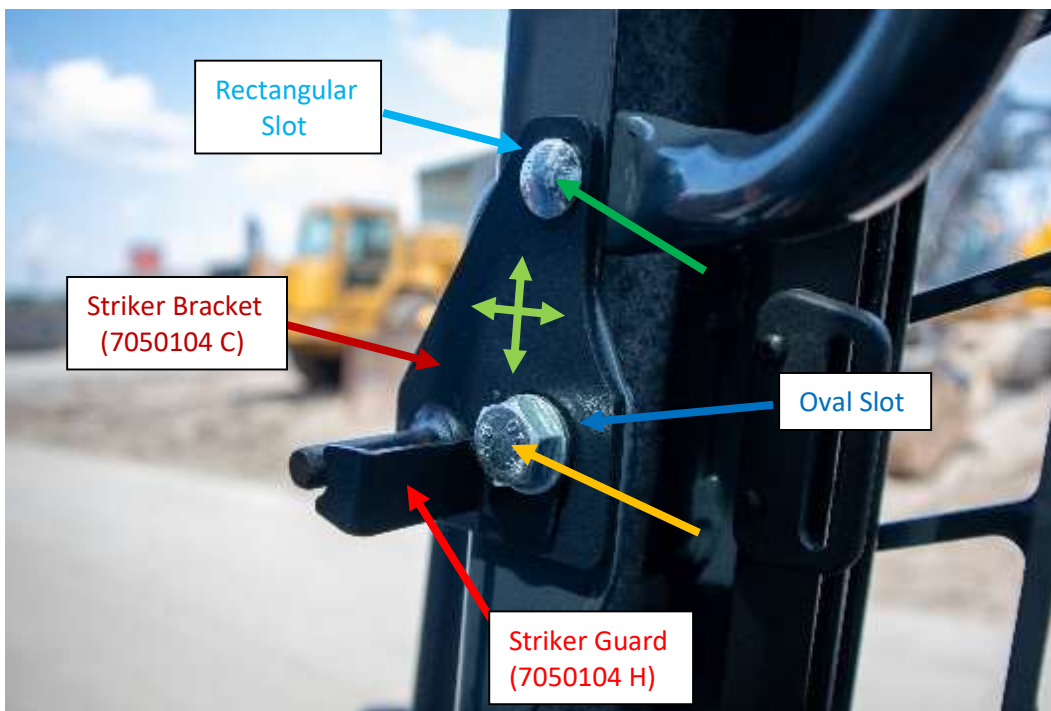
Step 4: Install the Polycarbonate Windshield on the Unit

Align the upper and lower hinges with the hinge pins on the unit and slide the windshield down into place. Install the cotter key onto the upper hinge pin. At this point, tighten the **M8 mounting bolts**. Reconnect the wiring connector for the wiper motor. Install the washer tube onto the plastic washer tube fitting. Reconnect the gas prop onto the ball mount.

Step 5: Install Striker and Striker Guard and Adjust

Remove the factory striker and striker guard from the unit. Remove the lower carriage bolt from the handle nearest the striker. Install the **Striker Bracket** and **Striker Guard** onto the unit using the provided **M12 x 35mm Hex Head Bolt**, **12mm Flat Washer** and **12mm Flange Nut** into the lower larger **oval slot** and the **5/16" x 1" Carriage Bolt**, **5/16" Flat Washer** and **5/16" Nylon Locknut** into the slotted **rectangular slot** on the top. Leave these two (2) bolts snug and do not tighten yet.

Carefully close the door until the door latch meets the striker to check for proper alignment. If the top of the door frame hits the horn then refer to Step 6 before adjusting the Striker Bracket. Adjust the Striker Bracket **up** or **down** and **in** or **out** as needed for proper tension, seal and alignment. Tighten the **M12 Bolt** and the **5/16" Nylon Locknut**.



Step 6: Horn Bracket Installation

Unplug the **two (2) wiring connectors** from the horn. Remove the **nut** from the carriage bolt that holds the horn in place and remove the horn. Replace the flat OEM horn mounting bracket with the mounting bracket provided. Reinstall the horn onto the unit and reconnect the two (2) wiring connectors. Return to Step 5 to complete the Striker adjustment.



Step 7: Sensor Bracket Installation

Remove the **two (2) nuts** holding the **OEM Sensor Bracket** onto the **Handle Bracket**. Install the **new Sensor Bracket** pushing the bracket **all the way to the right** and install the **two (2) nuts**. From inside the unit, close the door and slide the new Sensor Bracket to the left until it is **approx. 1/32"** from the Sensor. Tighten the **two (2) nuts** and start the unit to verify the sensor is in the correct position.

