



WE BUILD NECESSITIES, NOT ACCESSORIES.

7010105

&

7010105T



THE PERRY COMPANY
WWW.PERRY-CO.COM

500 S. VALLEY MILLS DRIVE
WACO, TX 76711
PHONE: 800-755-4269
FAX: 254-756-2166

INSTALLATION INSTRUCTIONS: **7010105 – 1/2" (Clear), 7010105T – 1/2" (Tinted)**

Replacement Windshield Fits: Case / New Holland

Case Models after 04-2011: SR250, SR150, SR175, SR200, SR220, SR130,
SV185, SV250, SV300, TR270, TR320, TV370B & TV380
after 05-2013: SR130, SR175, SR200, SR210, SV185
after 10-2013: SR200, SR210, TR270

New Holland Models after 2013: L213, L215, L218, L220, L223, L225, L230, L316, L318, L320, L321, L328, L334
C227, C232, C238, C327, C332, C334, C337, C345 & C362

Hardware Kit:

- 2 – 1/4" x 3/4" Carriage Bolts
- 2 – 1/4" Flange Nuts
- 5 – 1/4" x 3/4" Button Head Bolts
- 5 – 1/4" External Tooth Washers
- 5 – 1/4" Hex Nuts
- 3 – M6 x 35mm Button Head Bolts
- 1 – M6 x 20mm Hex Head Bolt
- 1 – M6 Hex Nut
- 2 – 5/16" Hinge Studs
- 4 – 5/16" Jam Nuts

Components:

- 1 – Case Windshield Polycarbonate 1/2"
- 1 – Case Kick Window Polycarbonate 1/4"
- 1 – Perry Co Kick Window Retainer (7010104A)
- 1 – Striker Bracket (7010105 A)



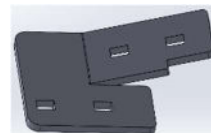
1/4" Case Kick
Window Poly



7010104 A



7010105 A



5/16" Hinge Stud



Step 1:

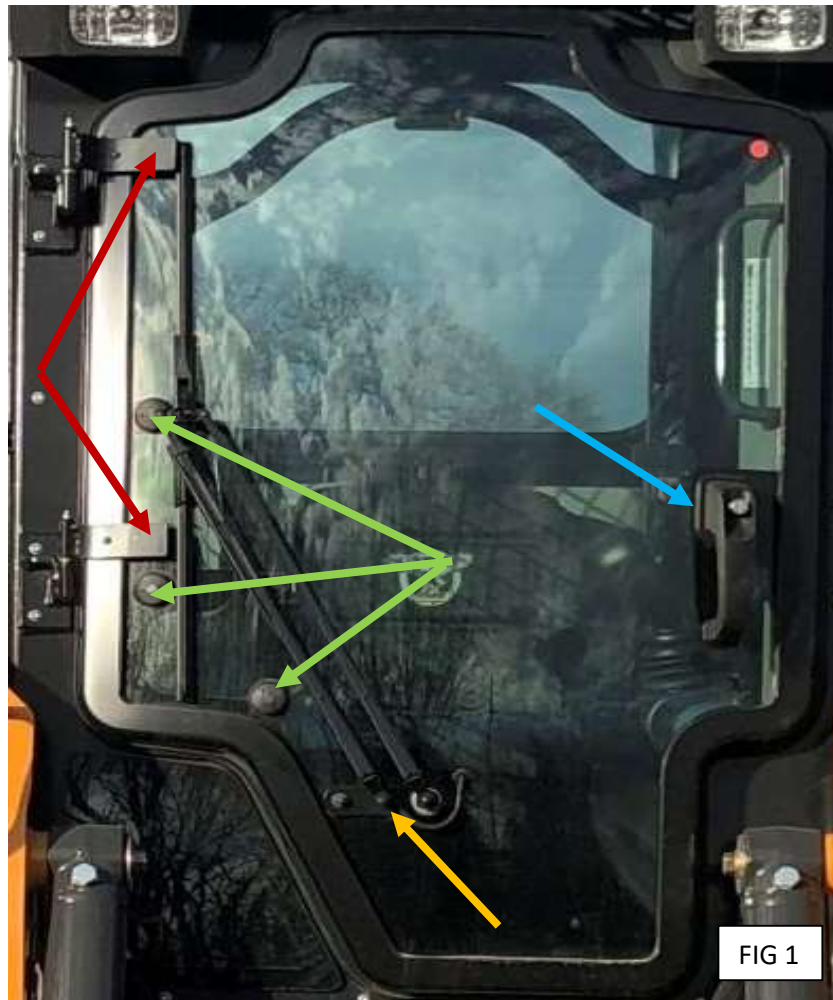
Hardware:

Tools Required:
10mm Wrench
13mm Wrench
Crescent Wrench

Instructions:

Unplug the wiper wiring connector and wiper washer tube. Disconnect the gas prop from the door. By lifting the door upward, remove the door from the loader. Remove the **Upper and Lower Hinges** from the door. Remove the **Latch and Outer Handle Assembly**. Remove the **Wiper Motor Assembly**. Remove the **Gas Prop / Inner Handle Assembly**. (Refer to **FIG 1** for locations)

Make sure to keep all of the OEM hardware until the end of the project because some of the OEM hardware will be reused.



Step 2:

Hardware:

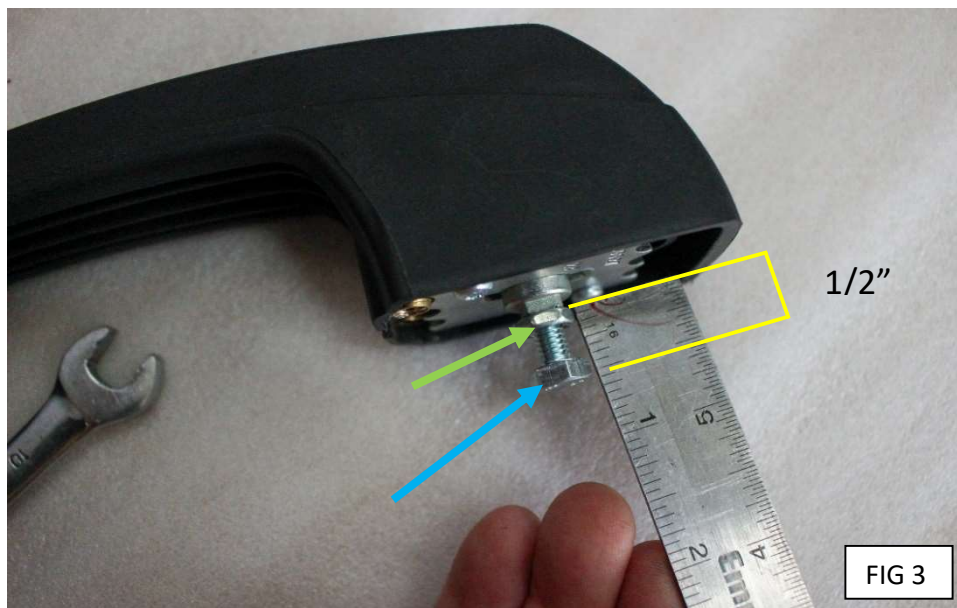
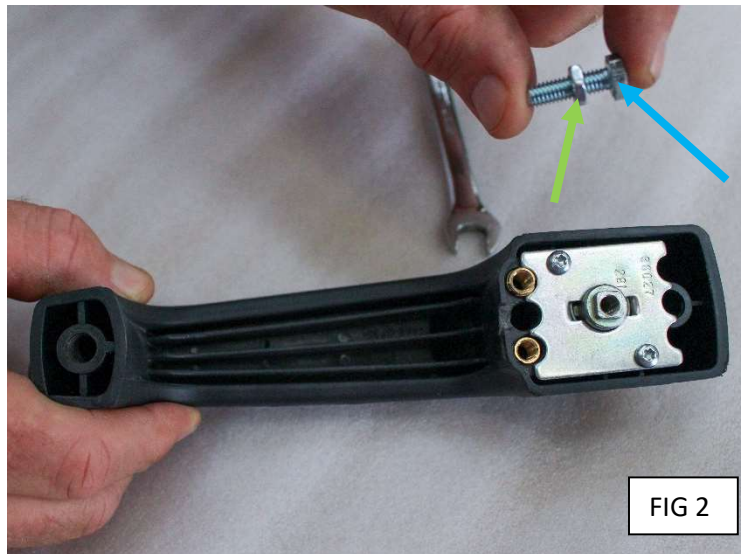
M6 x 20mm Hex Head Bolt (1)
M6 Hex Nut (1)

Tools Required:

10mm Wrench

Instructions:

Thread the **M6 Hex Nut** onto the **M6 x 20mm Hex Head Bolt** as shown in **FIG 2**. Screw the bolt assembly into the Latch Handle as shown in **FIG 3** and tighten. Be sure to hold the 1/2" dimension as shown in **FIG 3**.



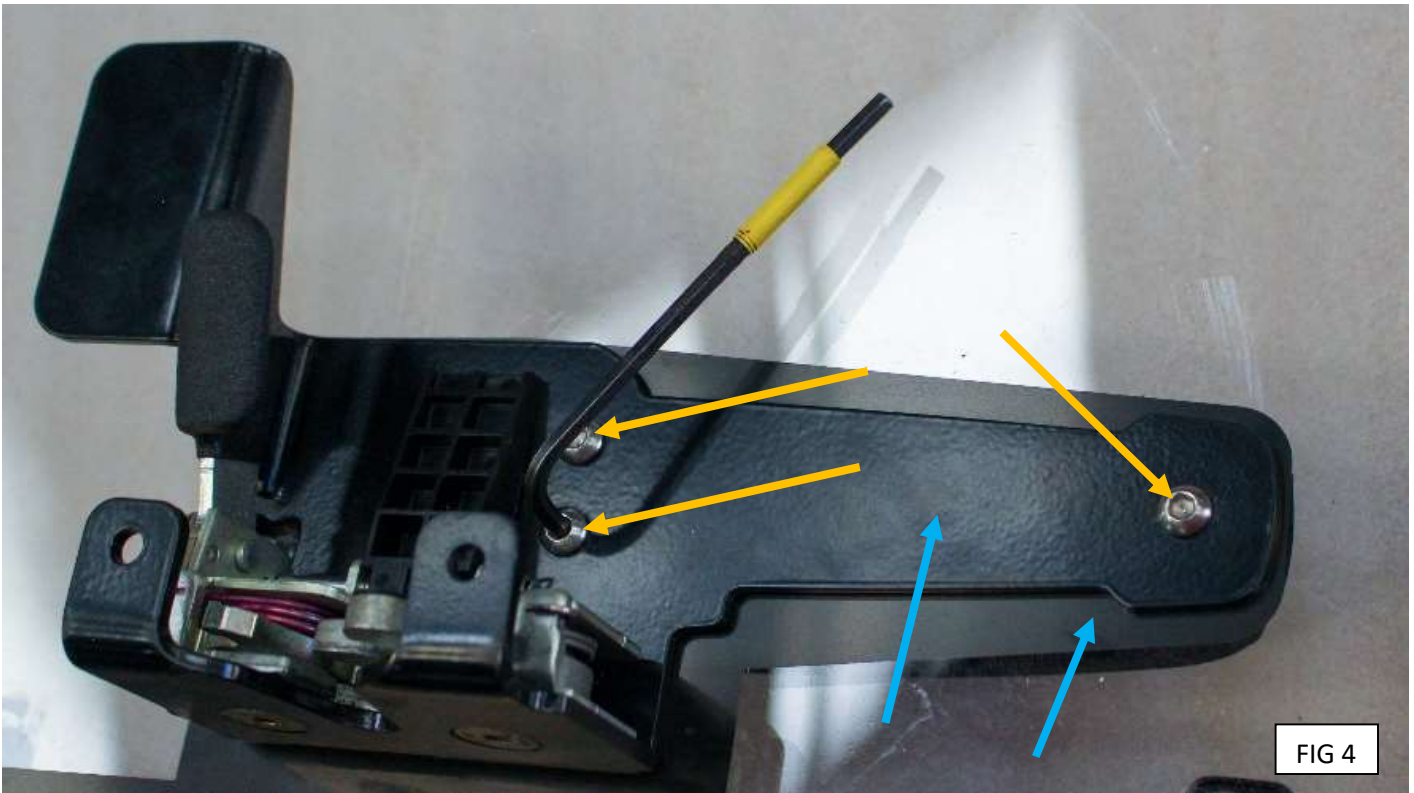
Step 3:

Hardware:
M6 x 35mm Button Head Bolts (3)

Tools Required:
5/32" Allen Wrench

Instructions:

Install the [Latch and Outer Handle Assembly](#) using the OEM hardware, replacing the OEM bolts with the (3) [M6 x 35mm Button Head Bolts](#) provided as shown in [FIG 4](#).



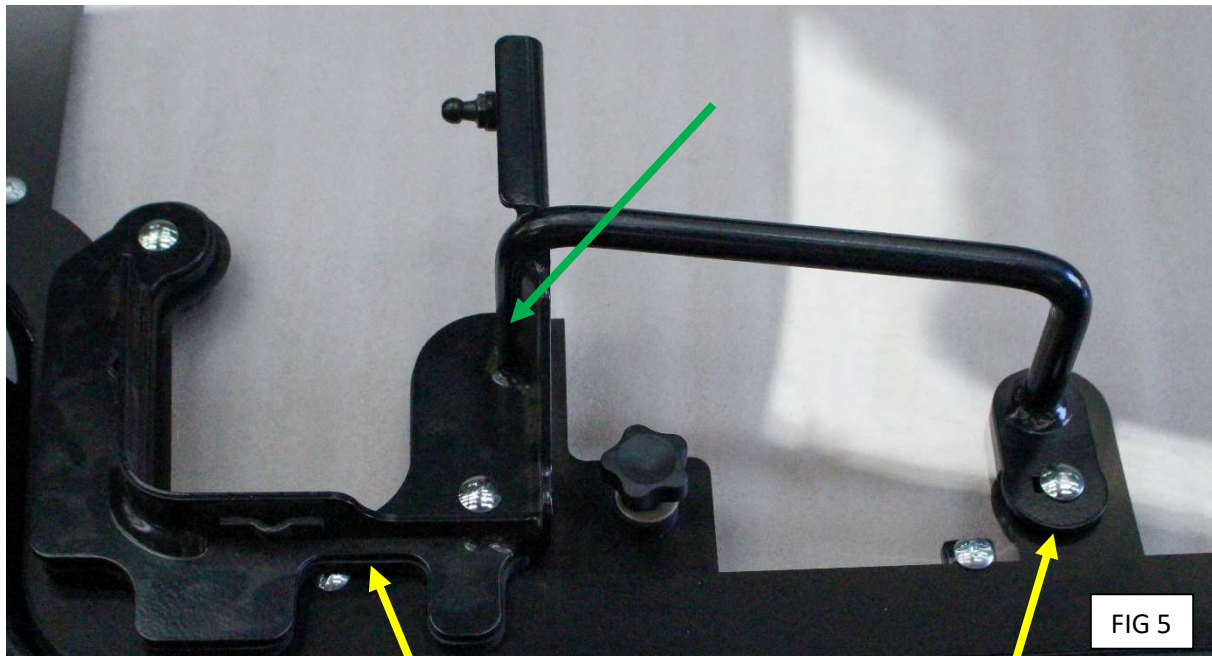
Step 4:

Hardware:

Tools Required:

Instructions:

Using the factory hardware, Install the **Gas Prop / Inner Handle Assembly** as shown in **FIG 5**. **DO NOT** install the (2) rubber gaskets between the polycarbonate and assembly shown in **FIG 6** as they are not needed.



Step 5:

Hardware:

Tools Required:

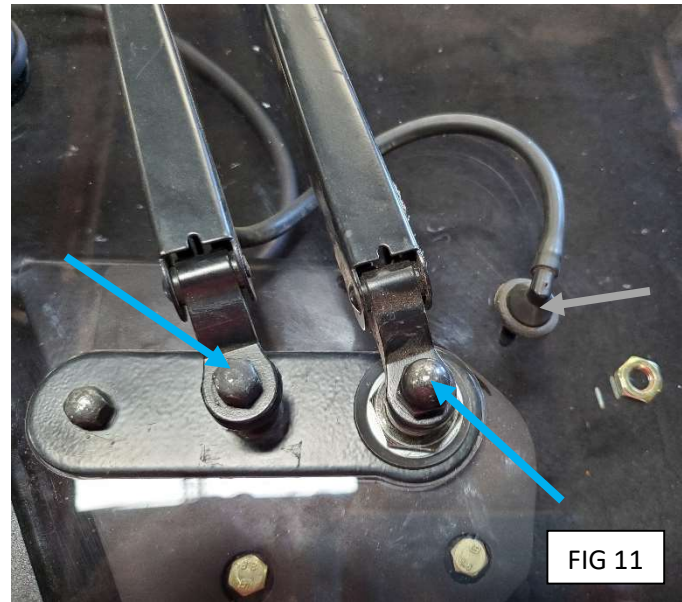
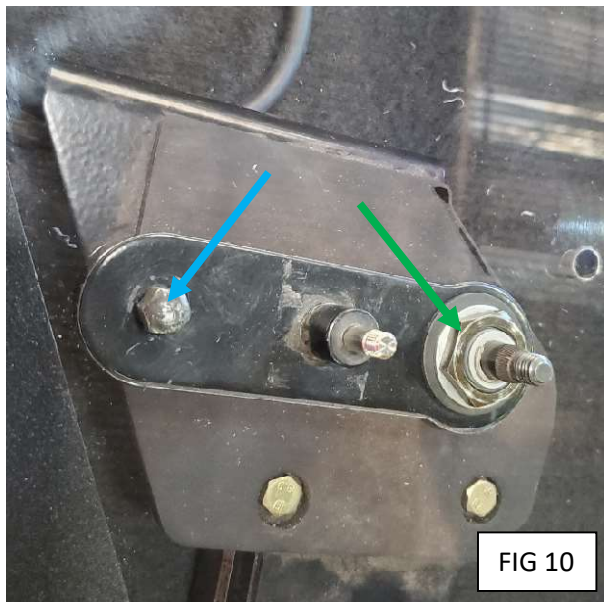
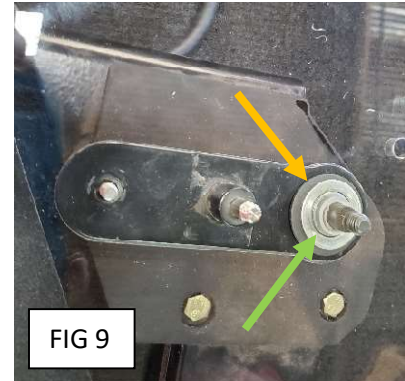
10mm Wrench

13mm Wrench

Crescent Wrench

Instructions:

Install the wiper motor on the inside of the windshield as shown in [FIG 7](#). Install the **wiper arm mounting bracket** onto the wiper motor assembly as shown in [FIG 8](#). Install the **rubber seal** and **large metal washer** onto the large wiper shaft as shown in [FIG 9](#). Install the **large factory hex nut** and **factory cap nut** as shown in [FIG 10](#). Install the wiper arm using the **(2) factory cap nuts** as shown in [FIG 11](#). Install the washer fluid tube fitting into the provided hole in the windshield using the factory nut (**DO NOT over tighten as breakage to fitting may occur**) as shown in [FIG 11](#).



Step 6:

Hardware:

5/16" Hinge Stud (2)
5/16" Jam Nuts (4)

Tools required:

13mm Wrench

Instructions:

Install (1) 5/16" Jam Nut onto each of the (2) 5/16" Hinge Studs as shown in [FIG 12](#). Place (1) 5/16" Hinge Stud (w_Jam Nut) into the smaller hole of the Upper and Lower Hinge locations as shown in [FIG 13](#) and [Fig 14](#) and install (2) 5/16" Jam Nuts and tighten. Using the factory knobs and hardware, install the Upper and Lower Hinges as shown in [FIG 15](#) and [FIG 16](#).



Step 7:

Hardware:

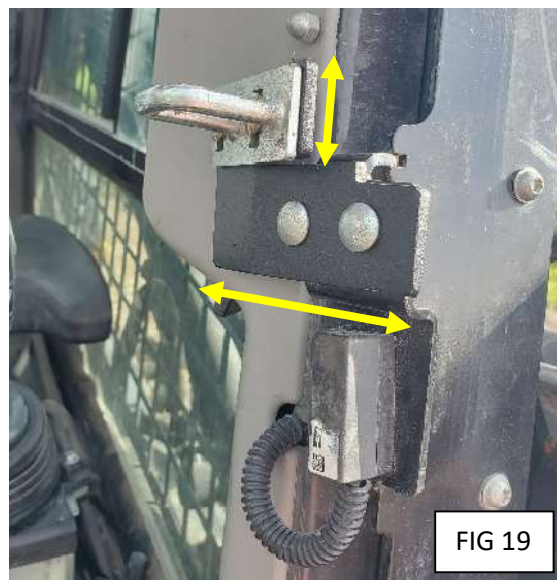
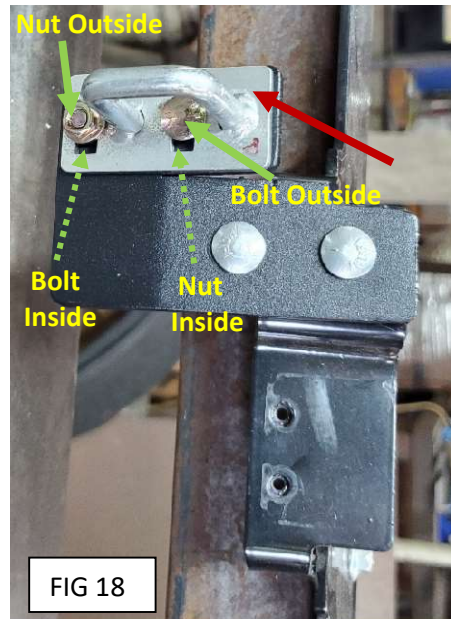
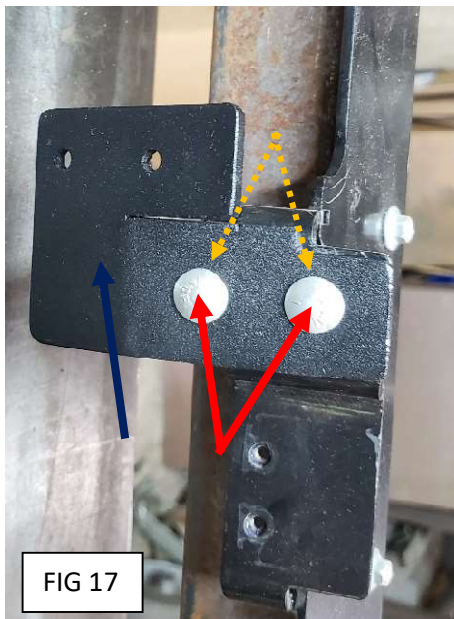
1/4" x 3/4" Carriage Bolts (2)
1/4" Flange Nuts (2)

Tools Required:

7/16" Wrench
10mm Wrench

Instructions:

Install the door onto loader and plug in connector for the wiper motor and reconnect the washer fluid tube. Remove the factory Striker from the machine. Using (2) 1/4" x 3/4" Carriage Bolts and (2) 1/4" Flange Nuts install the Striker Bracket as shown in FIG 17. Using the factory hardware install the Striker onto the Striker Bracket as shown in FIG 18. Be sure to place the factory hardware in the configuration shown in FIG 18. At this point, gently close the door and check alignment between the latch and striker. Make the proper adjustments to the striker as shown in FIG 19 and tighten all the hardware.



Kick Window removal and installation.

Step 1: Remove the Glass from the Frame Assembly

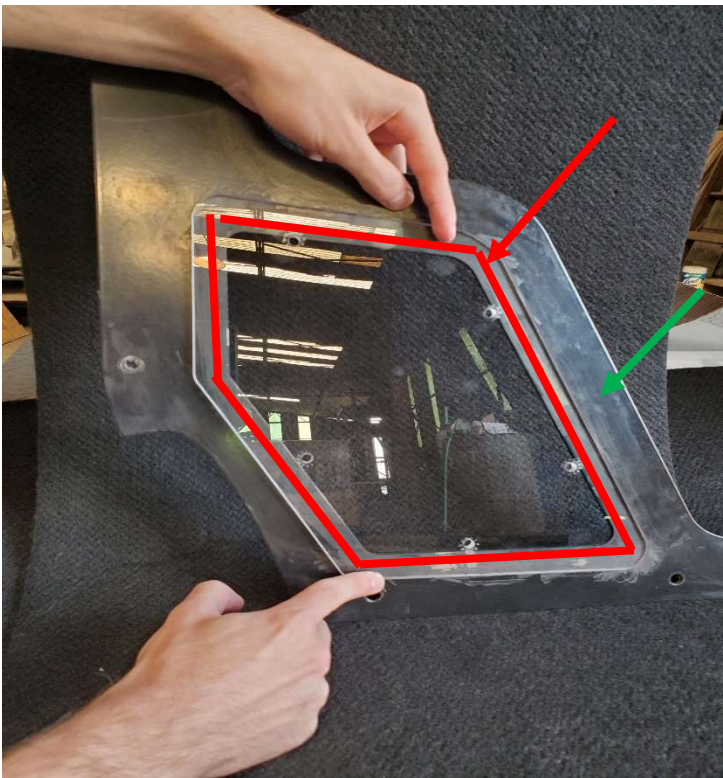
Use a utility knife or similar apparatus to remove the glass from the frame assembly by cutting through the kick window adhesive.

Step 2: Remove adhesive from the Frame Assembly

Use a utility knife or similar apparatus to remove any leftover adhesive from the frame assembly. The frame assembly needs to be clear of obstructions between the frame assembly and the polycarbonate replacement kick window.

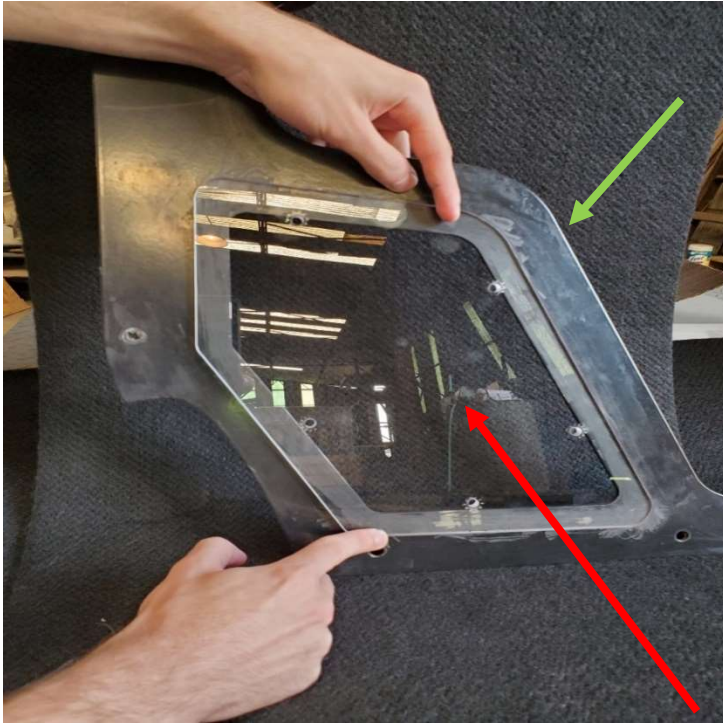
Step 3: Apply Clear RTV Silicone to the Frame Assembly (Exterior Face)

Apply a thin **bead of Clear RTV Silicone** around the **exterior face** of the **frame assembly**. This bead should be located between the polycarbonate and the **frame assembly** after the polycarbonate is installed.

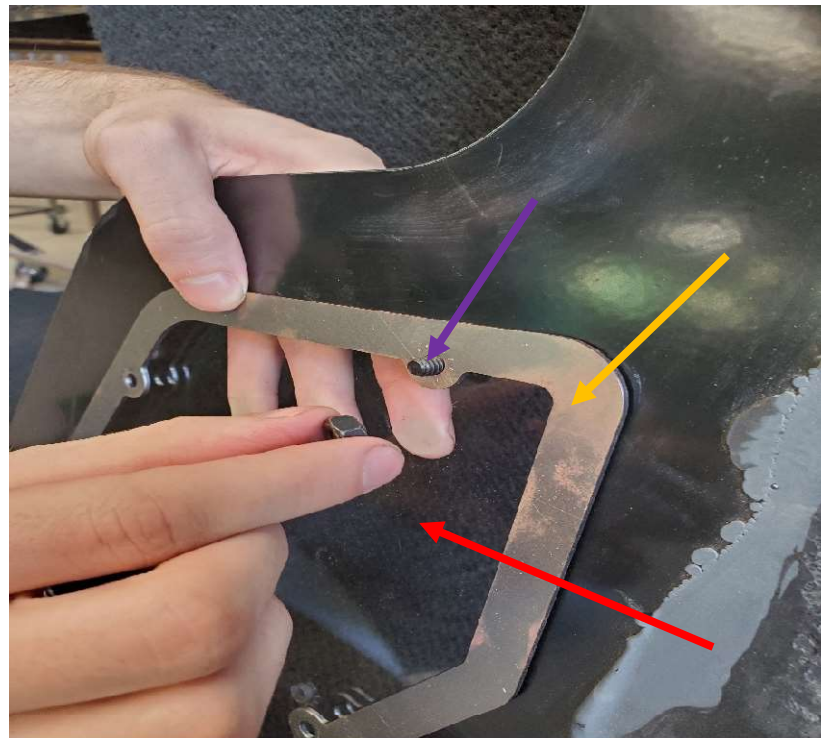


Step 4: Position the Polycarbonate Replacement Kick Window on the Frame Assembly.

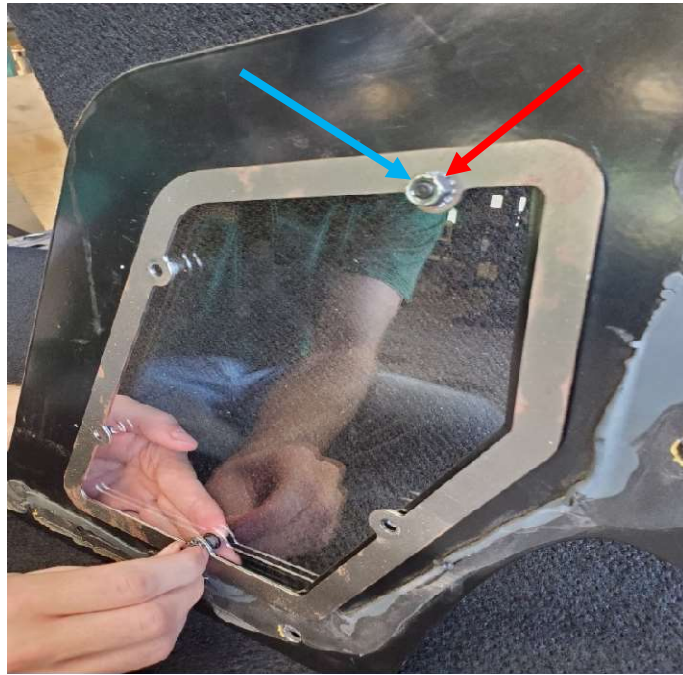
Now that the **frame assembly** is clean and clear of obstructions, (#1) place the **polycarbonate kick window replacement** on the **exterior of the frame assembly** as shown below. (#3) Next, install the Kick Window Retainer and install external tooth washers and nuts to hold into place. (#4) Install the remaining bolts, lock washers and nuts and tighten to complete this installation.



While holding the **polycarbonate kick window** in place, insert a **1/4-20 x 3/4" Button Head Bolt** into the bottom and top holes of the polycarbonate kick window and **install the Perry Co. Kick Window Retainer**.



Install remaining $\frac{1}{4}$ " External Tooth Washers and $\frac{1}{4}$ " Nuts and tighten.



(Completed Kick Window Installed)



Only use a mixture of Dawn (or similar) dish soap and water to clean polycarbonate