



**WE BUILD NECESSITIES, NOT ACCESSORIES.**

**7050106**

**&**

**7050106T**



**THE PERRY COMPANY**  
**WWW.PERRY-CO.COM**

500 S. VALLEY MILLS DRIVE  
WACO, TX 76711  
PHONE: 800-755-4269  
FAX: 254-756-2166

## **INSTALLATION INSTRUCTIONS:** **7050106 (Clear), 7050106T (Tinted)**

**Replacement Windshield Fits: John Deere**

2024: 330P, 331P, 333P, 334P & 335P-Series

### **Hardware Kit:**

- 1 - 1/2" x 1-1/4" Hex Bolt
- 1 - 1/2" Flange Nut
- 1 - 1/2" Flat Washer
- 3 - M6 x 20mm Hex Bolt
- 1 - M6 x 45mm Hex Bolt
- 1 - M6 Hex Nut
- 5 - 1/4" Zinc Flat Washer
- 3 - 1/4" Black Flat Washer
- 1 - 5/16" x 1" Hex Bolt
- 1 - 5/16" Hex Nut

### **Components:**

- 1 - John Deere 1/2" Polycarbonate WS
- 1 - Upper Hinge (7050106 G)
- 1 - Lower Hinge (7050106 H)
- 1 - Striker Bracket (7050106 J;K)
- 1 - Sensor Bracket (7050106 L)
- 2 - 3/16" Thk. Hinge Washers (7050104 G)
- 2 - 1/4" Thk. Hinge Washers (7050106 E)
- 1 - Latch Handle Gasket (7050104 K)



Hinge Washer  
(7050104 G)



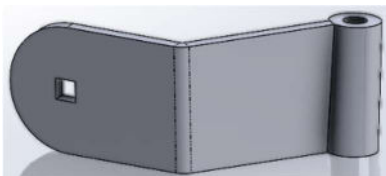
Hinge Washer  
(7050106 E)



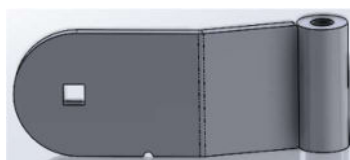
Sensor Bracket  
(7050106 L)



Latch Handle Gasket  
(7050104K)



Upper Hinge  
(7050106 G)



Lower Hinge  
(7050106 H)



Striker Bracket  
(7050106 J;K)

## Step 1:

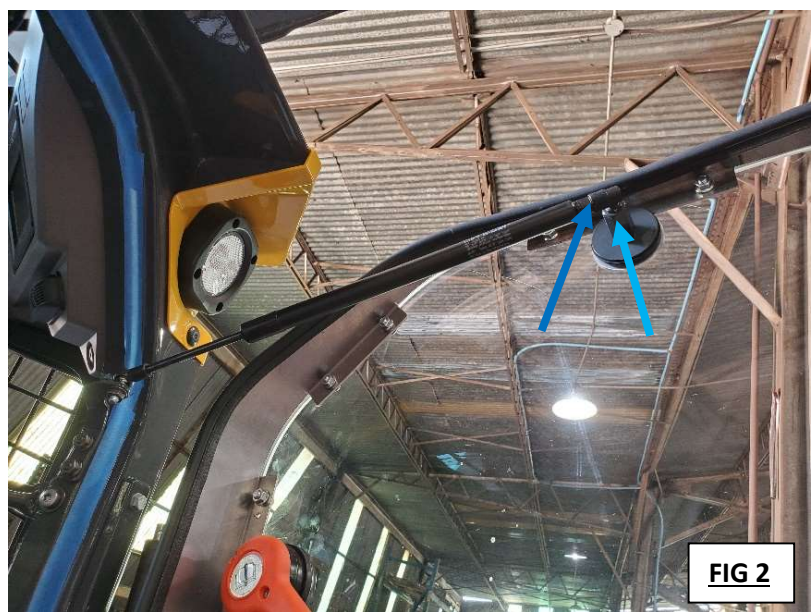
Hardware:

Tools Required:  
Phillips Screwdriver  
Needle Nose Pliers

Instructions:

From inside the cab, remove the Wiper Motor Cover as shown in **FIG 1**. Disconnect the **Electrical Connector** for the Wiper Motor and unplug the **Washer Tube** (**FIG 1**). Disconnect the **Gas Prop** from the **Ball Mount** on the door as shown in **FIG 2**. From the outside of the unit, remove the **Cotter Key** and **Washer** from both the Upper and Lower Hinges as shown in **FIG 3**. At this point, the windshield is ready to be removed from the unit. Place door on a clean and flat working surface.

**Make sure to keep all the OEM hardware until the end of the project because some of the OEM hardware will be reused.**





## Step 2:

### Hardware:

### Tools Required:

13mm Wrench or Socket & Ratchet

4mm Allen Wrench

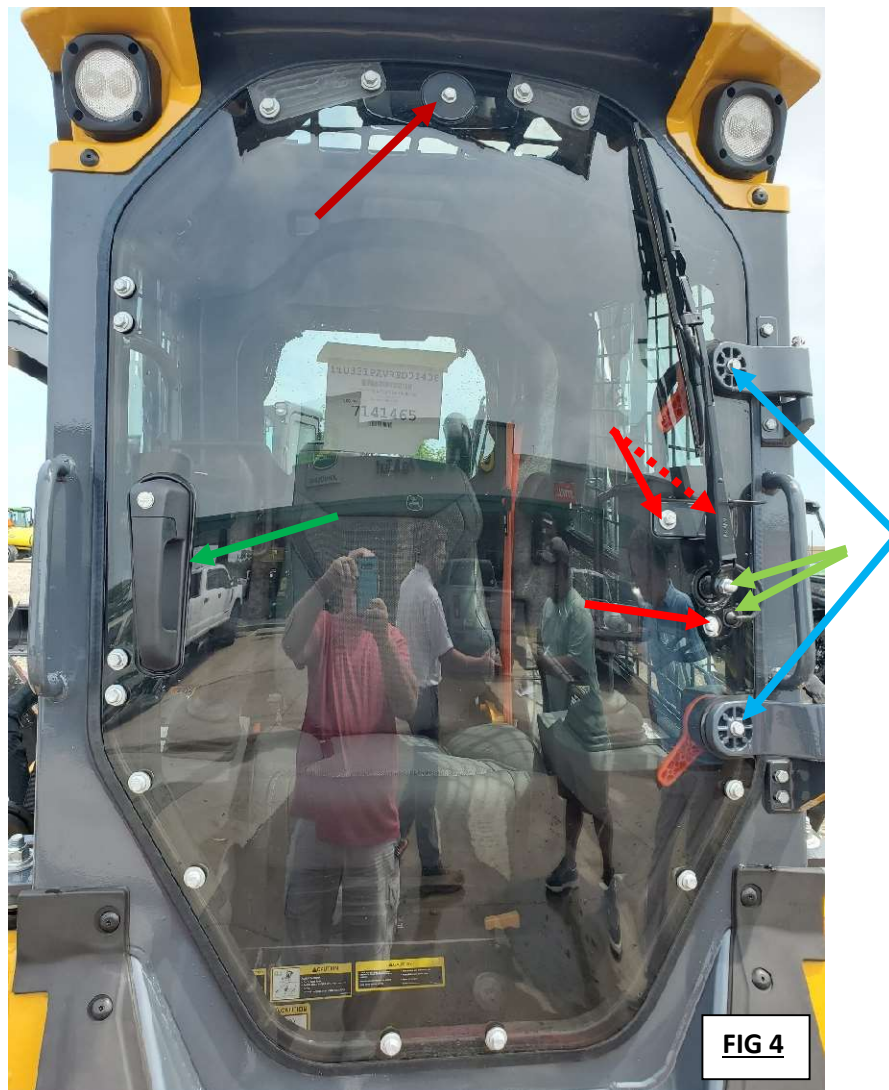
10mm Wrench or Socket & Ratchet

Crescent Wrench

T27 Torx

### Instructions:

Remove the **Gas Prop Ball Mount** from the factory door (**FIG 4**). Remove the **Latch Handle Assembly** from the factory door (**FIG 4**). Remove the plastic **Washer Tube Fitting** from the factory door and remove the **Wiper Arm** from the Wiper Motor (**FIG 4**). Remove the (3) **smaller bolts** to remove the Wiper Motor Assembly from the factory door (**FIG 4**). Remove the **Upper** and **Lower Hinges** by removing the **M8 bolts** from the Latch Assemblies (**FIG 4**). **Make sure to keep all the OEM hardware until the end of the project because some of the OEM hardware will be reused.**



### Step 3:

#### Hardware:

M6 x 20mm Hex Bolts	(3)
M6 x 45mm Hex Bolt	(1)
M6 Hex Nut	(1)
1/4" Black Flat Washers	(3)

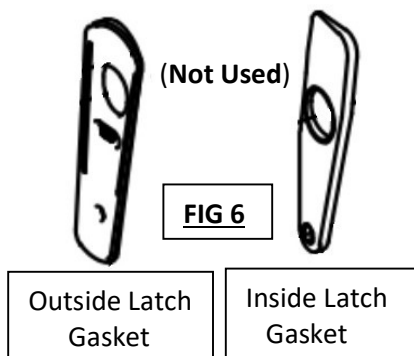
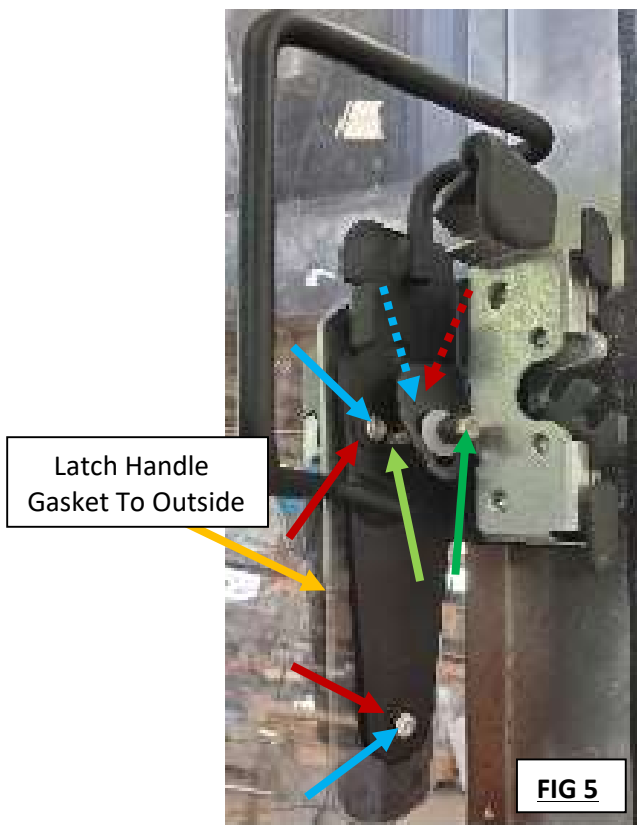
#### Tools Required:

13mm Wrench or Socket & Ratchet
10mm Wrench or Socket & Ratchet
Crescent Wrench

#### Instructions:

**For this step, use the OEM hardware that was set aside in Step #1 & #2.**

Using (3) M6 x 20mm Hex Bolts and (3) 1/4" Black Flat Washers install the Latch Handle Assembly onto the Polycarbonate Windshield using the supplied Latch Handle Gasket on outside of the polycarbonate as shown in FIG 5. Install (1) M6 x 45mm Hex Bolt and (1) M6 Hex Nut into the handle location shown in FIG 5. Do not install the inside and outside latch gaskets (these will not be used) shown in FIG 6. Install the rubber grommets and install the Wiper Motor Assembly and Washer Tube Fitting onto the Polycarbonate Windshield as shown in FIG 7.



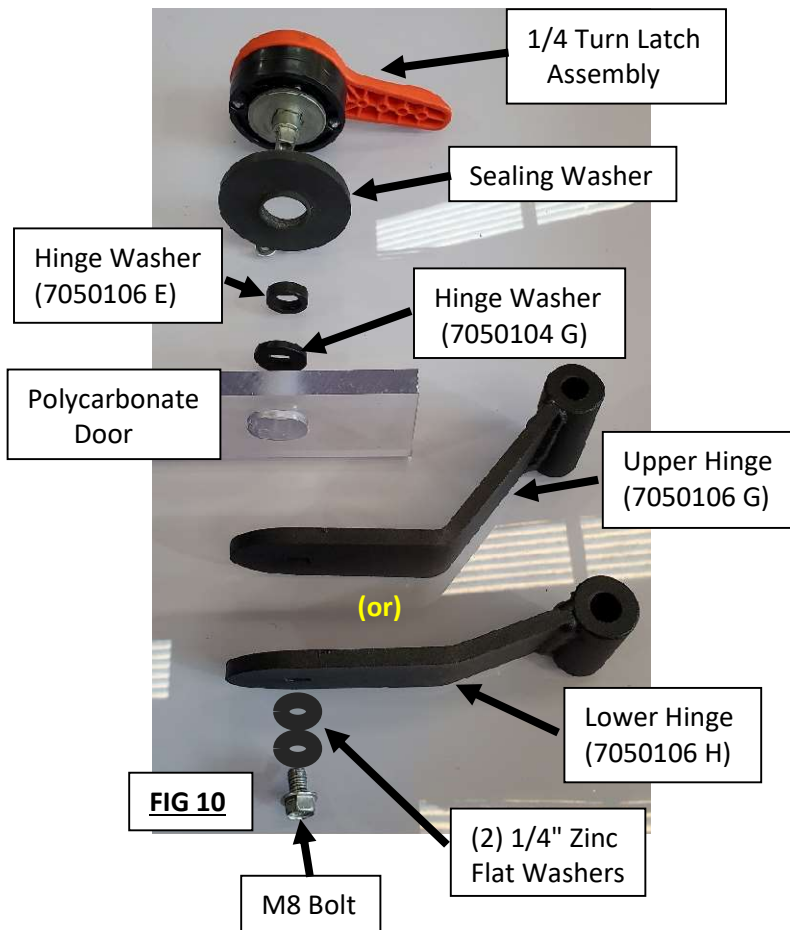
## Step 4:

Hardware:  
1/4" Zinc Flat Washers (4)

Tools Required:  
13mm Wrench or Socket & Ratchet

### Instructions:

Install the Gas Prop Ball Mount as shown in [FIG 8](#) & [FIG 9](#). Install the new Upper and Lower Hinges in the order as shown in [FIG 10](#). For ease of installing the new polycarbonate door onto the unit, do not fully tighten the M8 mounting bolts until after the door is installed on the unit. Install the Wiper Arm and Washer Tube onto the door as shown in [FIG 11](#). **DO NOT over-tighten the nut for the washer tube fitting.**





## Step 5:

Hardware:

Tools Required:  
Needle Nose Pliers

### Instructions:

Align the upper and lower hinges with the hinge pins on the unit and slide the door down into place as shown in [FIG 12](#). Install the [washers](#) and [cotter pins](#) onto the upper and lower hinge pins ([FIG 12](#)). At this point, tighten the (2) [M8 mounting bolts](#) ([FIG 12](#)). Reconnect the wiring connector for the wiper motor as shown in [FIG 13](#). Install the washer tube onto the plastic washer tube fitting ([FIG 13](#)). Reconnect the gas prop onto the ball mount mounted to the door as shown in [FIG 14](#).



## Step 6:

### Hardware:

1/2" x 1-1/4" Hex Bolt	(1)
1/2" Hex Nut	(1)
1/2" Flat Washer	(1)
5/16" x 1" Hex Bolt	(1)
5/16" Hex Nut	(1)
1/4" Flat Washer	(1)

### Tools Required:

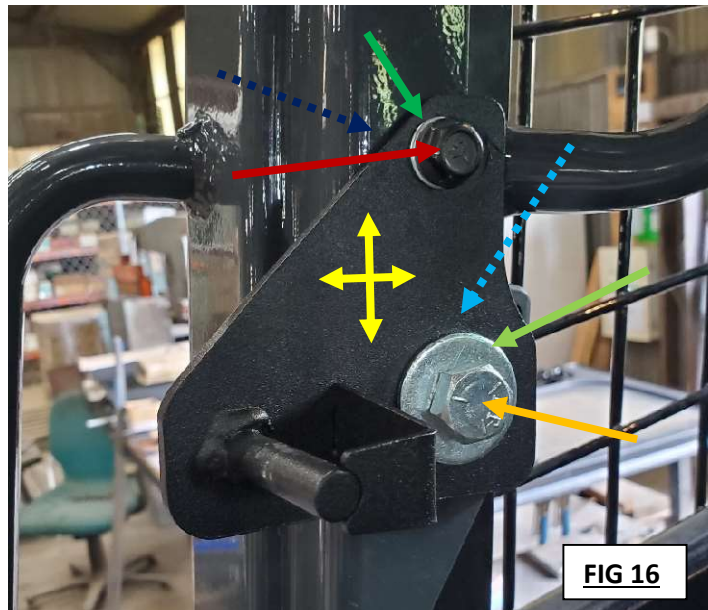
18mm Wrench
Crescent Wrench
T45 Torx
13mm Wrench

### Instructions:

Remove the factory striker and striker guard from the unit. Remove the lower **Torx bolt** from the handle nearest the striker as shown in **FIG 15**. Install the Striker Bracket onto the unit using (1) 1/2" x 1-1/4" Hex Bolt, (1) 1/2" Flat Washer and (1) 1/2" Hex Nut and install (1) 5/16" x 1" Hex Bolt, (1) 1/4" Flat Washer and (1) 5/16" Flange Nut as shown in **FIG 16**.

Leave these snug and do not tighten yet.

Carefully close the door until the door latch meets the striker to check for proper alignment. Adjust the Striker Bracket up or down and in and out as needed for proper tension, seal and alignment. Tighten the 1/2" x 1-1/4" Hex





## Step 7:

Hardware:

Tools Required:

10mm Wrench or Socket and Ratchet

Phillips Screwdriver

### Instructions:

Remove the (2) nuts holding the OEM Sensor Bracket onto the Handle Bracket as shown in [FIG 17](#). Install the new Sensor Bracket pushing the bracket all the way to the right and install the (2) nuts. From inside the unit, close the door and slide the Sensor Bracket to the left until it is approx. 1/32" from the Sensor as shown in [FIG 18](#). Tighten the (2) nuts and start the unit to verify that the Sensor Bracket is in the proper position. Adjust as needed to operate the unit.

