

**The
Perry
Company**



WE BUILD NECESSITIES, NOT ACCESSORIES.

7030901



THE PERRY COMPANY
WWW.PERRY-CO.COM

500 S. VALLEY MILLS DRIVE
WACO, TX 76711
PHONE: 800-755-4269
FAX: 254-756-2166

Installation Instructions:

7030901

Fits: Kubota SVL

Models: 95-2 & 97-2

Scan To View
Install Video



Hardware Kit:

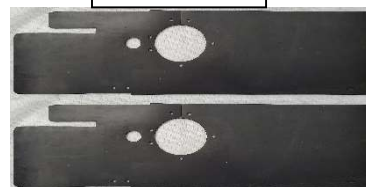
- 8 – 1/4" x 3/4" Hex Bolts
- 4 – 1/4" x 1" Hex Bolts
- 34 – 1/4" Flange Nuts
- 4 – 5/16" x 1" Hex Bolts
- 2 – 3-1/2" to 4" Hose Clamps
- 4 – 1/4" Hex Nuts
- 4 – 1/4" x 1/2" x 5/16" Nylon Spacers (White)



Components:

- | | |
|--------------------------------|---------------|
| 2 – Front Rubber Section | (70309FR01) |
| 2 – Rear Rubber Section | (70309RR01) |
| 1 – Driver Outer Cyl Clamp | (7030901 ACD) |
| 1 – Pass Outer Cyl Clamp | (7030901 ACP) |
| 1 – Driver Inner Cyl Clamp | (7030901 BCD) |
| 1 – Pass Inner Cyl Clamp | (7030901 BCP) |
| 1 – Driver Inner Backing Plate | (7030901 ED) |
| 1 – Pass Inner Backing Plate | (7030901 EP) |
| 1 – Driver Outer Backing Plate | (7030901 FD) |
| 1 – Pass Outer Backing Plate | (7030901 FP) |
| 1 – Driver Rear Cover Plate | (7030901 GJD) |
| 1 – Pass Rear Cover Plate | (7030901 GJP) |
| 1 – Driver Hinge | (7030901 HDD) |
| 1 – Pass Hinge | (7030901 HDP) |
| 2 – Front Lower Mount | (7030901 L) |
| 1 – Driver Front Cover Plate | (7030901 MD) |
| 1 – Pass Front Cover Plate | (7030901 MP) |
| 8 – Rear Clamp | (7030901 N) |

70309FR01



70309RR01



7030901 ACD/BCD



7030901 BCP/ACP



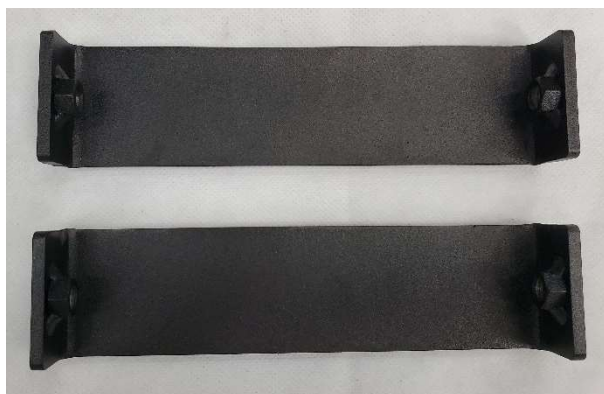
7030901 GJD



7030901 GJP



7030901 L



7030901 HDD/HDP



7030901 ED



7030901 EP



7030901 MP/MD



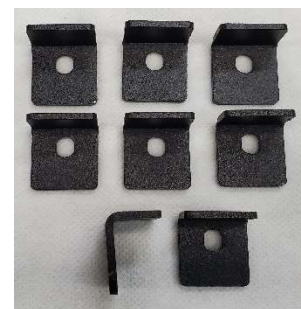
7030901 FD



7030901 FP



7030901 N



Step 1:

Hardware Required:

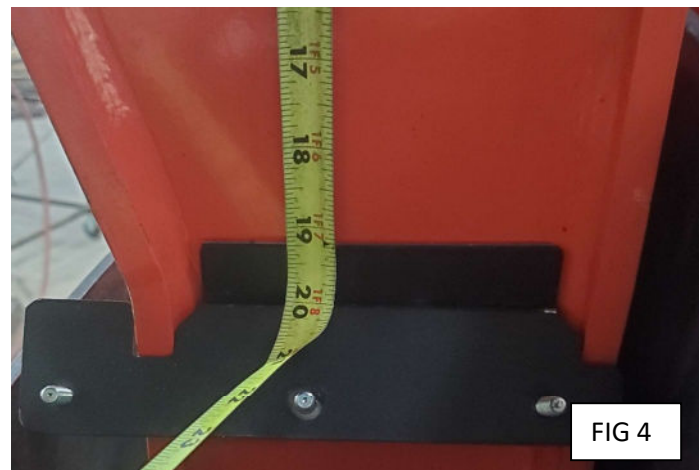
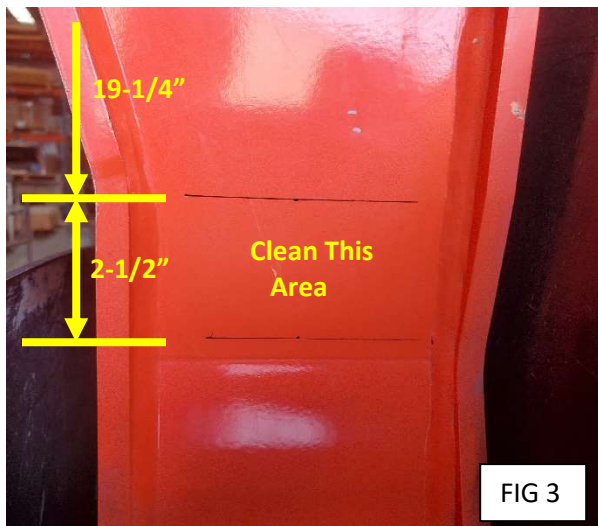
Tools Required:

Tape Measure

Instructions:

Raise the loader's lift arm all the way until the pivot arm is in the "straight up" position as shown in FIG 1 and shut loader off. Starting at the "top" of the driver side pivot arm (FIG 2) measure down to 19-1/4" and mark with a pencil or maker as shown in FIG 3. Measure down another 2-1/2" from this point and place another mark as shown in FIG 3. Clean the area between the two marks with alcohol or similar cleaning solution. Peel off the tape backing from the back side of the Driver Hinge and place onto the pivot arm as shown in FIG 4. The "top" of the hinge should be placed at the 19-1/4" mark (FIG 4).

***Repeat this process for the Passenger side.**



Step 2:

Hardware Required:

Tools Required:

14mm Socket and Ratchet or Wrench

Instructions:

Remove the hose / wiring hold down clamp from the driver side pivot arm. Install the Driver Front Cover Plate as shown in FIG 5. The Cover Plate will be mounted between the bolt head and hold down clamp as shown.

*Repeat this process for the Passenger side.



Step 3:

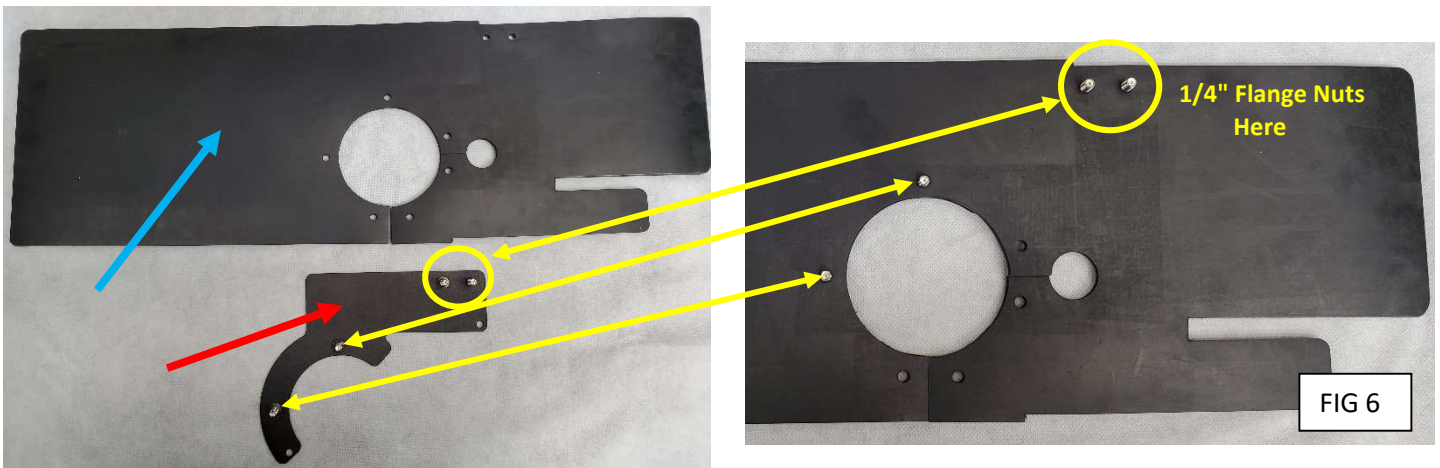
Hardware:
1/4" Flange Nuts

(4)

Tools Required:

Instructions:

Install the **Driver Inner Backing Plate** onto the **Front Rubber Section** as shown in **FIG 6**. Install the Front Rubber Section onto the driver side hydraulic cylinder as shown in **FIG 7**. The outer slit in the rubber will be to the outside of the machine as shown. Install (2) 1/4" Flange Nuts onto the studs to hold the backing plate into place as shown and leave loose.



Step 4:

Hardware:

3-1/2" x 4" Hose Clamp	(2)
1/4" x 3/4" Hex Bolts	(4)
1/4" Flange Nuts	(16)

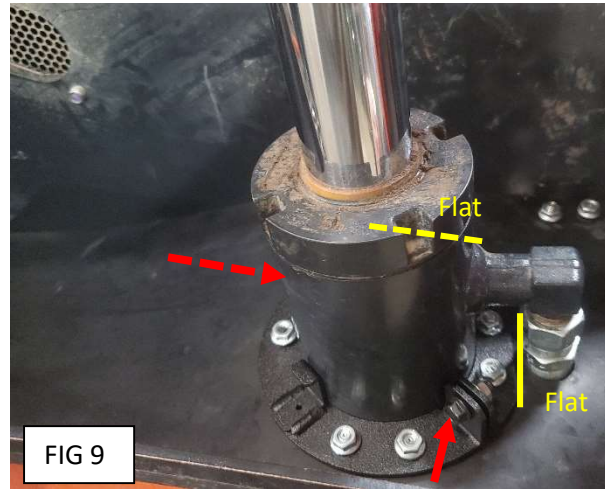
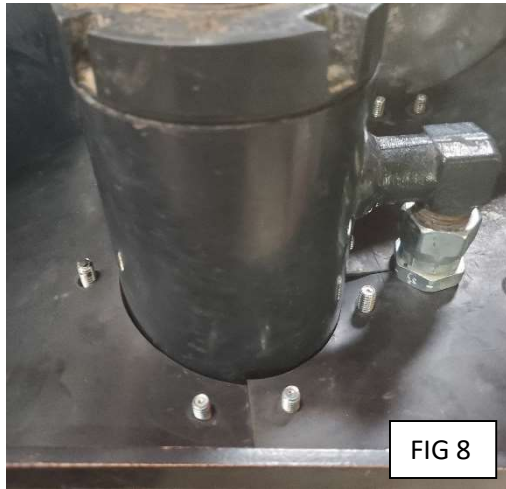
Tools Required:

Tape Measure
7/16" Socket, Ratchet and Extension or Wrench
3/8" Wrench
1/4" Nut Driver

Instructions:

Install the Driver Outer Backing Plate as shown in **FIG 8**. Install the Driver Inner and Outer Cylinder Clamps as shown in **FIG 9** using (2) 1/4" x 3/4" Hex Bolts and (8) 1/4" Flange Nuts (leave loose). The "flats" on the Inner Cylinder Clamps will be to the "inside" and between the cylinder and hydraulic hose as shown. Measure down 5-1/2" from top of cylinder to top of cylinder clamp and install the hose clamp as shown in **FIG 10** and tighten. Tighten all (6) of the flange nuts, both Hex Bolts and the (2) Hex Nuts installed in Step 3.

***Repeat Steps 3 and 4 for the Passenger Side.**



Step 5:

Hardware:

1/4" x 3/4" Hex Bolts	(4)
1/4" x 1" Hex Bolts	(4)
1/4" Hex Nuts	(4)
1/4" Flange Nuts	(8)
1/4" x 1/2" x 5/16" Nylon Spacers (White)	(4)

Tools Required:

3/8" Wrench
7/16" Socket and Ratchet or Wrench

Instructions:

Install (1) 1/4" x 3/4" Hex Bolt and (1) 1/4" Hex Nut onto (4) of the Rear Clamps as shown in FIG 11 and tighten. Install (1) Clamp Assembly and (1) 1/4" Flange Nut into the "outer front" hole and (1) Clamp Assembly and (1) 1/4" Flange Nut into the "outer rear" hole of the Driver Rear Cover Plate as shown in FIG 12 (leave loose). Using (2) 1/4" x 1" Hex Bolts, (2) 1/4" x 1/2" x 5/16" Nylon Spacers (White) and (2) 1/4" Hex Nuts install (1) Rear Clamp into the "inner front" and (1) Rear Clamp into the "inner rear" holes of the Driver Rear Cover Plate as shown in FIG 13 (leave loose). Refer to FIG 14 for the hardware configuration.

***Repeat this process for the Passenger Side**



Step 6:

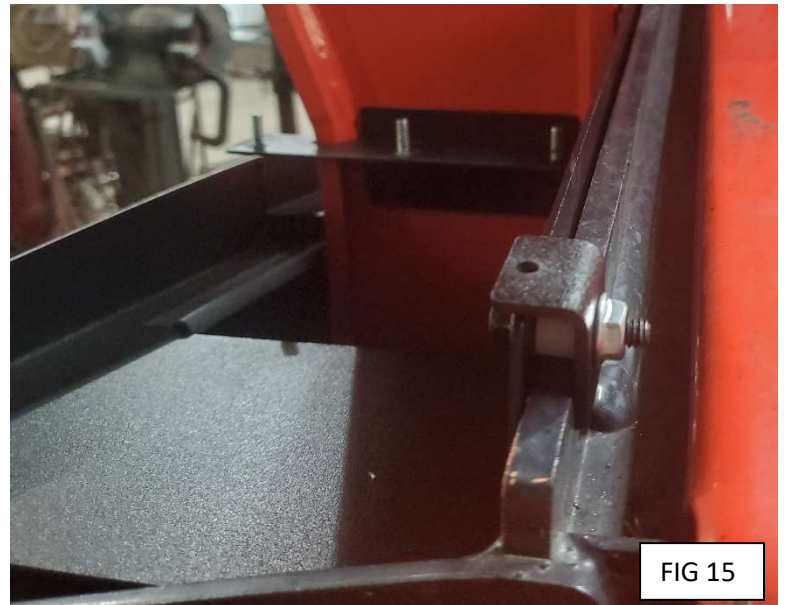
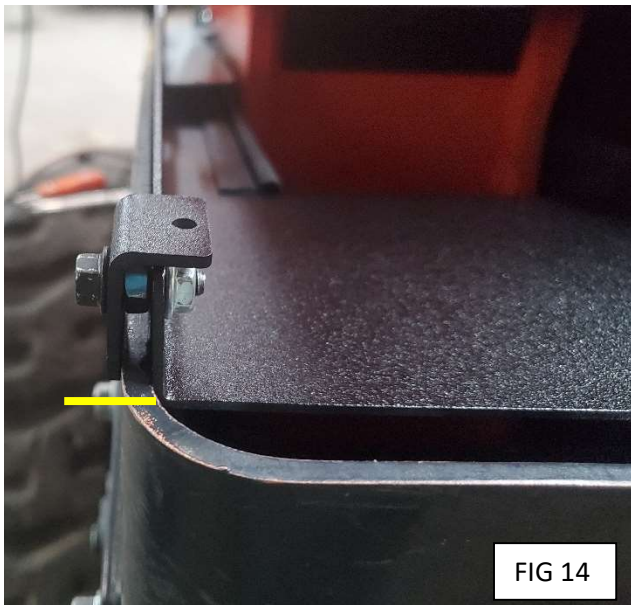
Hardware:
1/4" Flange Nuts (6)

Tools Required:
3/8" Wrench
7/16" Socket and Ratchet or Wrench

Instructions:

Install the Driver Rear Cover Plate into the rear "well" of the machine as shown in FIG 14 and FIG 15. The rear of Cover Plate should line up with the start of the radius on the rear "well" (FIG 14). Open the clamps to straddle the rear inner and outer plates of the machine and push the Cover Plate downward until the spacers bottom out and tighten the hardware. Using (3) 1/4" Flange Nuts install the Driver Rear Rubber Section as shown in FIG 16.

***Repeat this process for the Passenger Side.**



Step 7:

Hardware:

5/16" x 1" Hex Bolts (4)

Tools Required:

Tape Measure
1/2" Socket and Ratchet or Wrench
Rubber Hammer or Mallet

Instructions:

Starting from the driver side welded control link guard toward front of machine (FIG 17), measure back 8-1/4" and mark with a marker or pencil as shown in FIG 18. Using (2) 5/16" x 1" Hex Bolts, install the Front Lower Mount on top of the Front Rubber Section. The front edge of the Front Rubber Section and front edge of the Front Lower Mount will be at this mark. Push the Front Lower Mount down against the Front Rubber Section and lightly snug the (2) 5/16" x 1" Bolts. Using a rubber hammer or mallet, tap the mount down and tighten the bolts as shown in FIG 19.

***Repeat this process for the Passenger Side.**

