



WE BUILD NECESSITIES, NOT ACCESSORIES.

7050801



THE PERRY COMPANY
WWW.PERRY-CO.COM

500 S. VALLEY MILLS DRIVE

WACO, TX 76711

PHONE: 800-755-4269

INSTALLATION INSTRUCTIONS:

7050801

Coupler Guard Fits: John Deere
317G, 320G, 324G, 325G

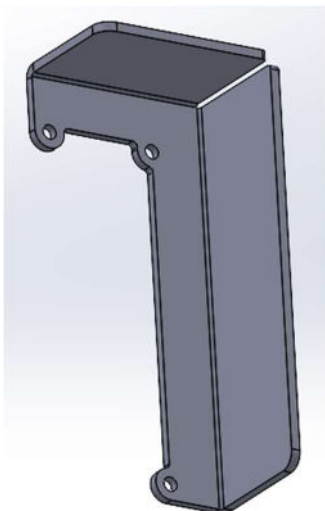
Hardware Kit:

M8 x 25mm Button Head Bolt (3)

5/16" Internal Tooth Lock Washer (3)

Components:

John Deere Coupler Guard (1)



Step 1:

Hardware:

M8 x 25mm Button Head Bolt (3)
5/16" Internal Tooth Lock Washer (3)

Tools Needed:

10mm Socket and Ratchet
5mm Allen Wrench

Use the 10mm ratchet and socket and remove the 3 bolts located on the face of the loader arm (FIG 1). You can install the coupler guard using the provided (3) M8 x 20mm Bolts and (3) 5/16" lock washer and a 5mm Allen wrench (FIG 2). Insert the bolts and use the 5mm Allen Wrench to tighten all the hardware. Installation is complete for the Coupler Guard (FIG 3).

