



**WE BUILD NECESSITIES, NOT ACCESSORIES.**

7080101

&

7080101T



**THE PERRY COMPANY**  
**WWW.PERRY-CO.COM**

500 S. VALLEY MILLS DRIVE

WACO, TX 76711

PHONE: 800-755-4269

## **INSTALLATION INSTRUCTIONS:** **7080101 (Clear) 7080101T (Tinted)**

**Replacement Windshield Fits: Takeuchi**  
TL10V2, TL12R2, TL12V2

### **Hardware Kit:**

M8 x 25mm Button Head Bolts	(12)
8mm Nylon Locknuts	(12)
Bubble Seal (93")	(1)
Foam Tape 3/16" x 3/4" x 22-3/4"	(1)
Foam Tape 3/16" x 3/4" x 31-1/2"	(1)
Foam Tape 3/16" x 3/4" x 42-1/2"	(2)
Zip Ties	(2)

### **Components:**

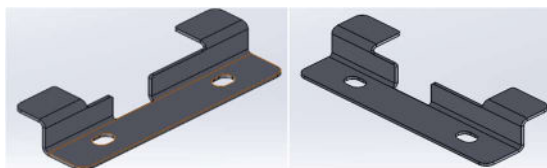
Lower Retainer (7080101 A)	(2)
Driver Middle Retainer (7080101 B)	(1)
Upper Retainer (7080101 C)	(2)
Pass. Middle Retainer (7080101 D)	(1)



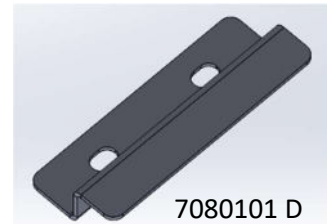
7080101 A



7080101 B



7080101 C



7080101 D

## Step 1

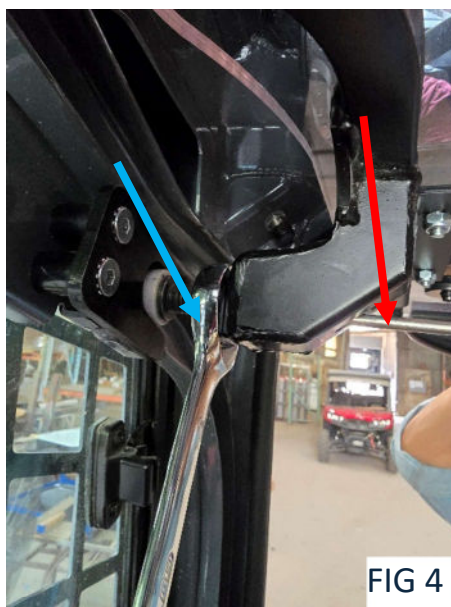
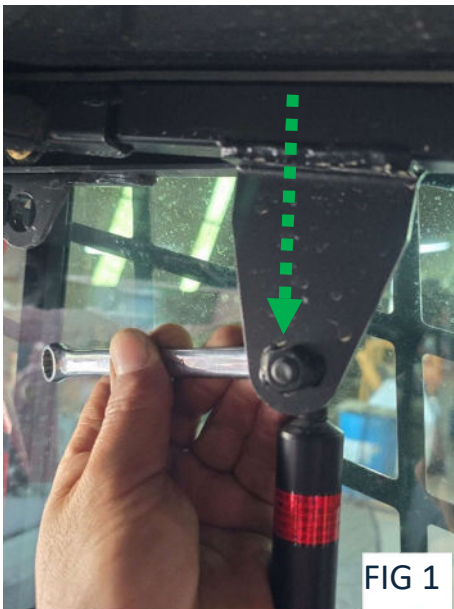
### Hardware:

### Tools Required:

13mm Wrench  
3/4" or 19mm Wrench  
Flat Head Screwdriver

### Instructions:

With the door in the "Open" position start by removing the gas props on both sides of the door using a 13mm wrench as shown in [FIG 1](#) and [FIG 2](#). The gas props will be reinstalled later. Next, remove both lower guide rollers using a 3/4" or 19mm wrench as shown in [FIG 3](#) and [FIG 4](#). Insert the flat head screwdriver into the slot so you can loosen the stud. Both left and right lower studs will need to be removed to pull the frame off the tracks. Leave door in "Open" position for the next step.





## Step 2:

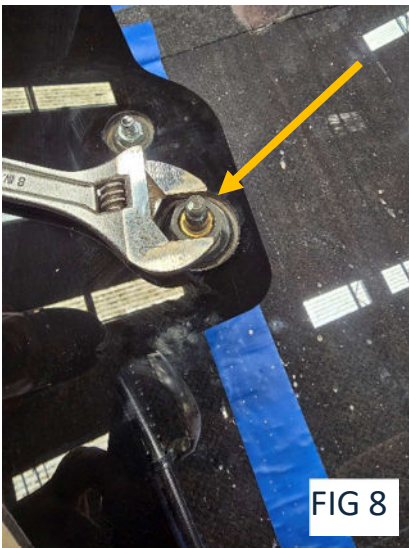
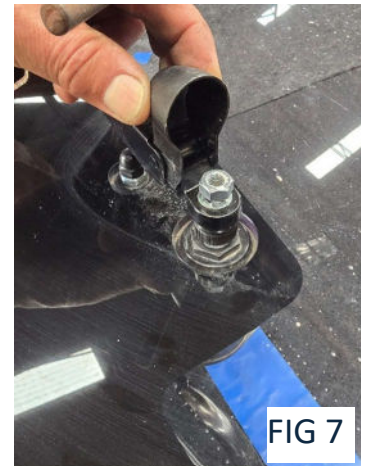
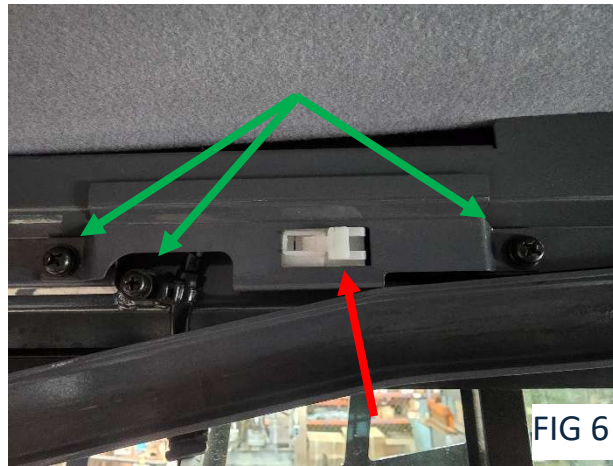
### Hardware:

### Tools Required:

Phillips Screwdriver  
Wire Cutters  
13mm Wrench  
Crescent Wrench

### Instructions:

Remove the zip tie for the wiper motor on the right side of the frame shown in [FIG 5](#). Remove the screws holding the cover plate in place in [FIG 6](#). Disconnect the wiring harness for the wiper motor after removing the plate in [FIG 6](#). Remove the door and frame from the machine door tracks. Once the door is off the machine, remove the wiper arm and wiper motor from the door using a crescent wrench and 13mm wrench as seen in [FIG 8 & FIG 9](#). Remove the wiper motor seals from the door shown in [FIG 10](#) and put aside as they will be used on the new door installation.



## Step 3:

### Hardware:

### Tools Required:

Phillips Screwdriver  
Utility Knife or cutting apparatus  
4mm Allen Wrench

### Instructions:

Use a Phillips Screwdriver to remove the top panel fasteners as seen in [FIG 11](#). Save the fasteners as they will be reused on install of new door. Use a utility knife or similar cutting apparatus to remove the glass from the windshield frame by cutting through the windshield adhesive as shown in [FIG 12](#). Remove any leftover adhesive from the windshield frame. **The windshield frame needs to be clear of obstructions between the windshield frame and the polycarbonate replacement windshield for sealing purposes.** After the frame is removed, remove the lower door handle panel and door handle as shown in [FIG 13](#). Remove the (2) lower bumpers as shown in [FIG 14](#) & [FIG 15](#) (will be reused in new door install). Remove the upper door handle as shown in [FIG 16](#) (will be reused in new door install).



FIG 11

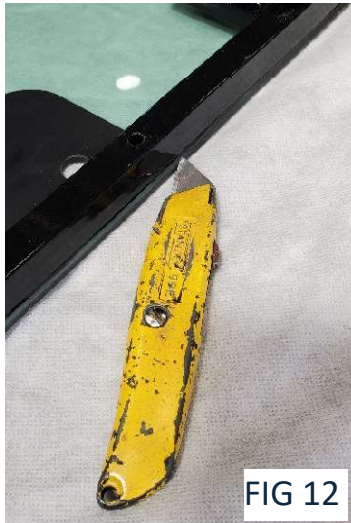


FIG 12



FIG 13



FIG 14



FIG 15



FIG 16



## Step 4:

### Hardware:

Foam Tape 3/16" x 3/4" x 31-1/2" (1)  
Foam Tape 3/16" x 3/4" x 42-1/2" (2)

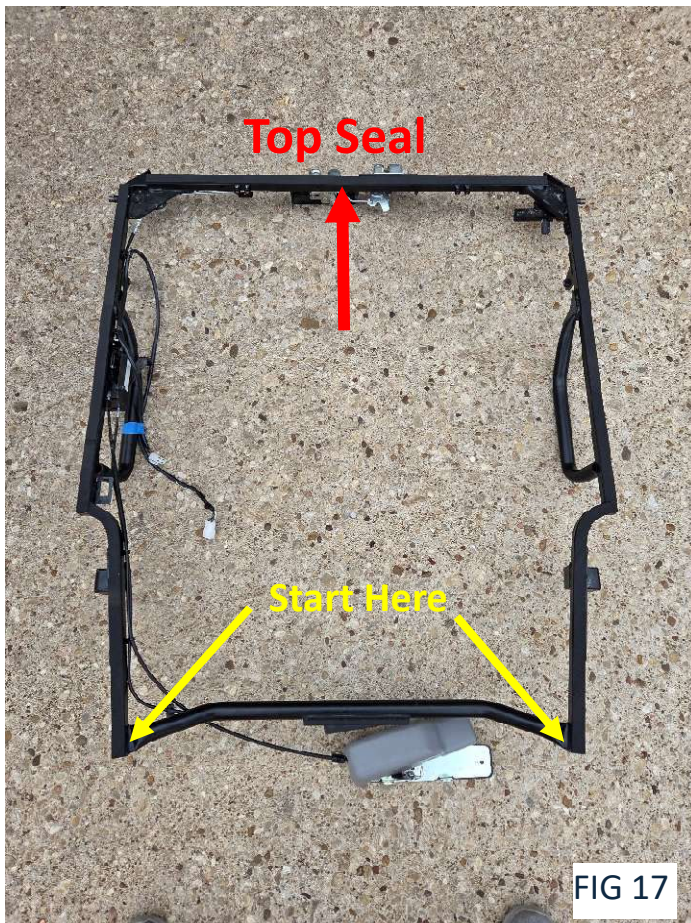
### Tools Required:

Scissors

### Instructions:

When applying the foam tape, remove the white adhesive backing in small sections. Apply the 3/16" x 3/4" x 42-1/2" foam tape onto "inner" side of the frame starting at the bottom as shown in [FIG 17](#). You will run the tape up the frame to the radius bend in the frame and cut as shown in [FIG 18](#). The remainder will be placed on the frame and run up to the top of frame. The 3/16" x 3/4" x 31-1/2" foam tape will be placed on the top of the frame as shown in [FIG 19](#). Trim excess foam as needed.

\*When applying foam tape, do not stretch and to leave in a relaxed state.



## Step 5:

### Hardware:

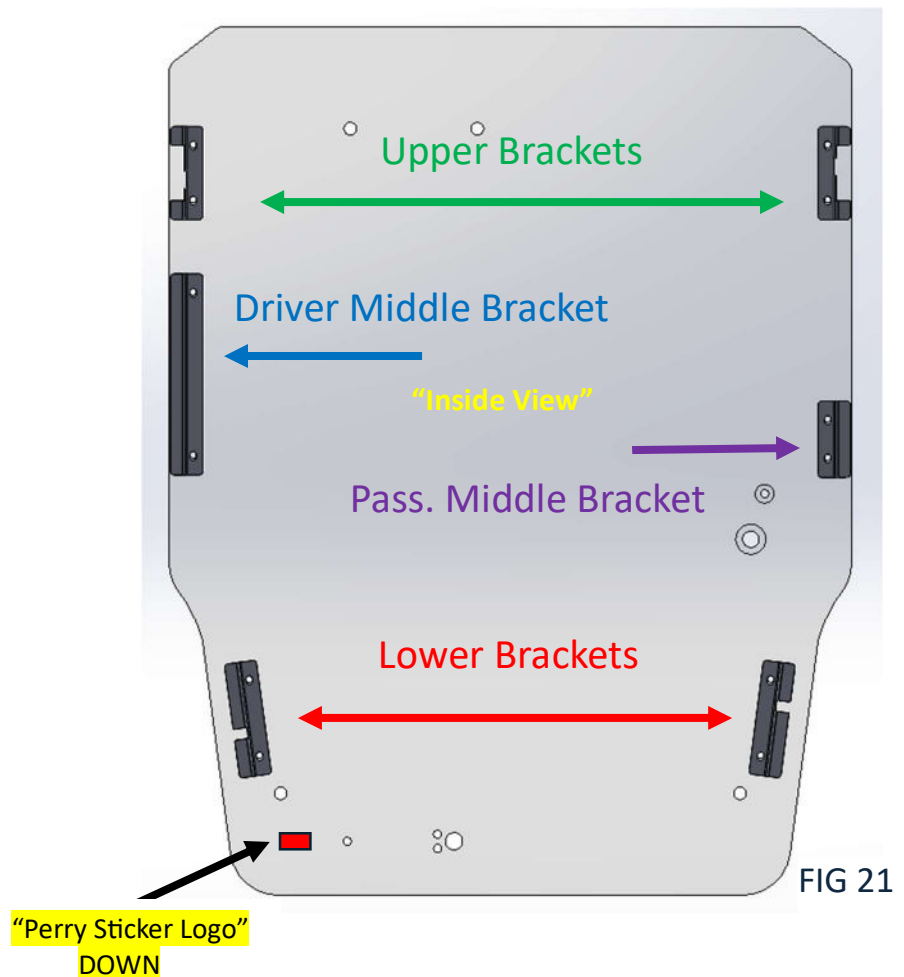
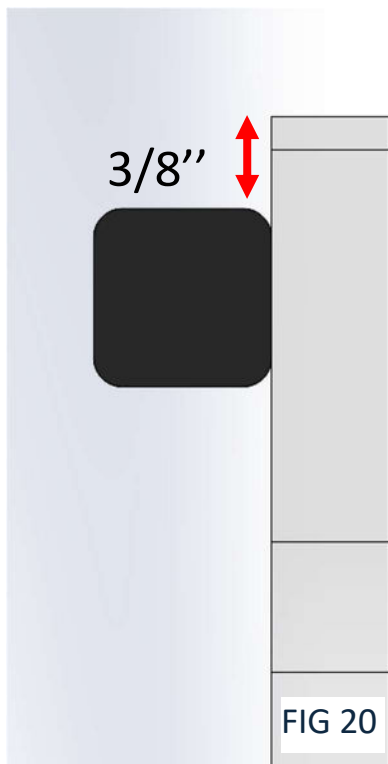
Lower Retainers (7080101 A)	(2)
Driver Middle Retainer (7080101 B)	(1)
Upper Retainers (7080101 C)	(2)
Pass. Middle Retainer (7080101 D)	(1)
M8 x 25mm Button Head Bolts	(12)
M8 Nylon Locknuts	(12)

### Tools Required:

5mm Allen Wrench
13mm Wrench
Phillips Screwdriver
Tape Measure

### Instructions:

After the foam tape is installed, lay the poly on a work table with the "Perry Sticker Logo" facing down. Place the frame on the poly and measure down 3/8" from the top of the poly (even on the sides). The poly will be offset on the frame as shown in [FIG 20](#). Install the provided brackets onto the frame and attach with (12) M8 x 25mm Button Head Bolts and (12) 8mm Nylon Locknuts. Refer to [FIG 21](#) for the location for each of the brackets provided. Be sure to make the necessary adjustments with the handle cable to fit the brackets onto the frame. Now you can reassemble the door by installing the wiper motor, lower bumpers, both upper and lower handles along with the plastic cover and rivets that were removed during [Step 3](#).





## Step 6:

### Hardware:

Bubble Seal (93") (1)  
Foam Tape 3/16" x 3/4" x 22-3/4" (1)

### Tools Required:

### Instructions:

Remove **door seal** from the machine around the cab as shown in **FIG 22**. Install the new **bubble seal** with the bubble facing inside the cab at the position shown in **FIG 23**. Remove the **lower bubble seal** from the factory door as shown in **FIG 22**. Apply a thin bead of RTV Silicone inside the track of the **bubble seal** and install on to the new polycarbonate door as shown in **FIG 24**. Place the 3/16" x 3/4" x 22-3/4" **foam tape** on the outside of the bottom lip on the cab between the lower factory seal trim as shown in **FIG 25**.





## Step 7:

### Hardware:

Zip Ties (2)

### Tools Required:

13mm Wrench  
3/4" or 19mm Wrench  
Flat Head Screwdriver  
4mm Allen Wrench

### Instructions:

Reinstall the door onto the upper tracks and reinstall the bottom studs and guide rollers. Make sure the studs measure 3/4" on both sides for optimal sliding operation of the door and tighten the jam nuts as shown in **FIG 26**. Reconnect the wiring harness for the wiper motor and reattach the cover plate with the 3 screws. Zip tie the cable back into place with the supplied zip ties. Reinstall both gas props using the 13mm wrench. Once everything is installed, gently close the door to make sure everything seals up tight. There should be no gaps between the door and the new bubble seal.

\*Adjustment may be required to the length of the lower guide roller studs for smooth operation.



**\*\*\*Only use a mixture of Dawn (or similar) dish soap and water to clean polycarbonate\*\***